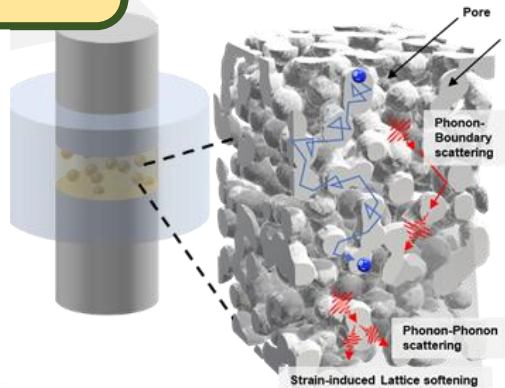
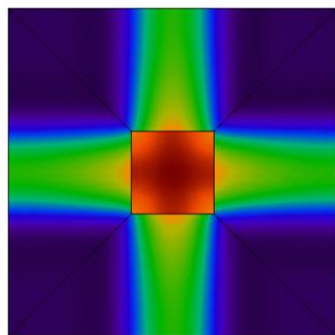
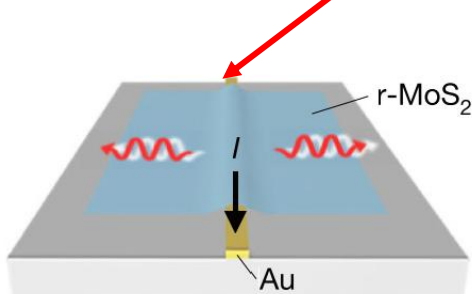
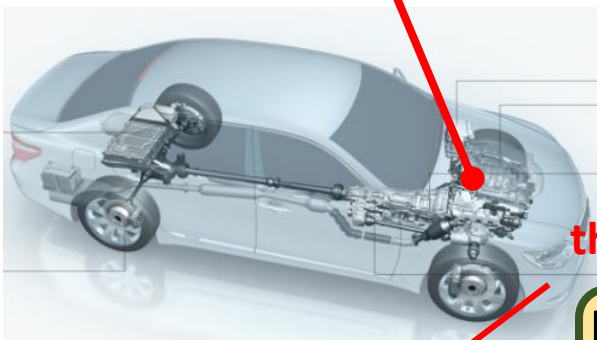
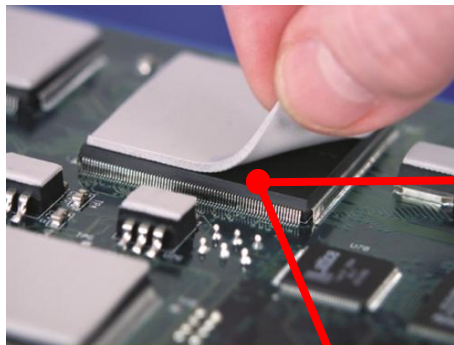


# Thermal management



# Insulation/Thermal routing/Thermoelectric

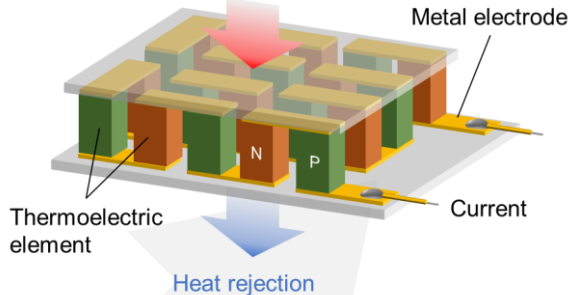
High thermal conductivity

Anisotropic thermal conductivity

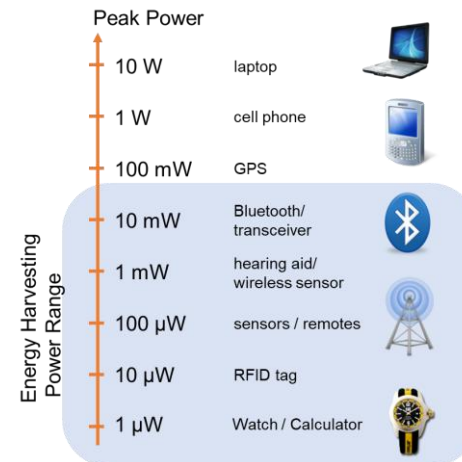
Low thermal conductivity

Thermal energy

thermoelectric



# Powering/Cooling



Internet of Things: <https://ja.wikipedia.org>

# Phonon engineering

Understanding/ Manipulation/ Fabrication

